

AP1622A L-Sealer Service Manual

LAYOUT

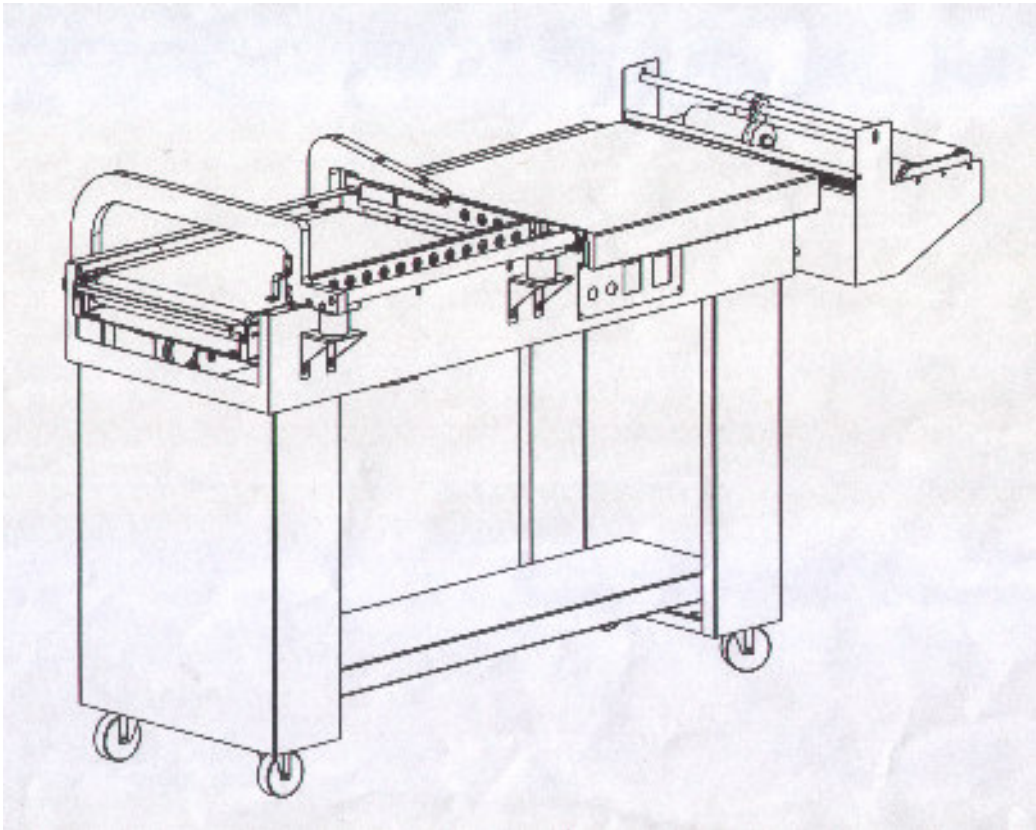


FIGURE 1-AP1622A

AP1622A L-Sealer Service Manual

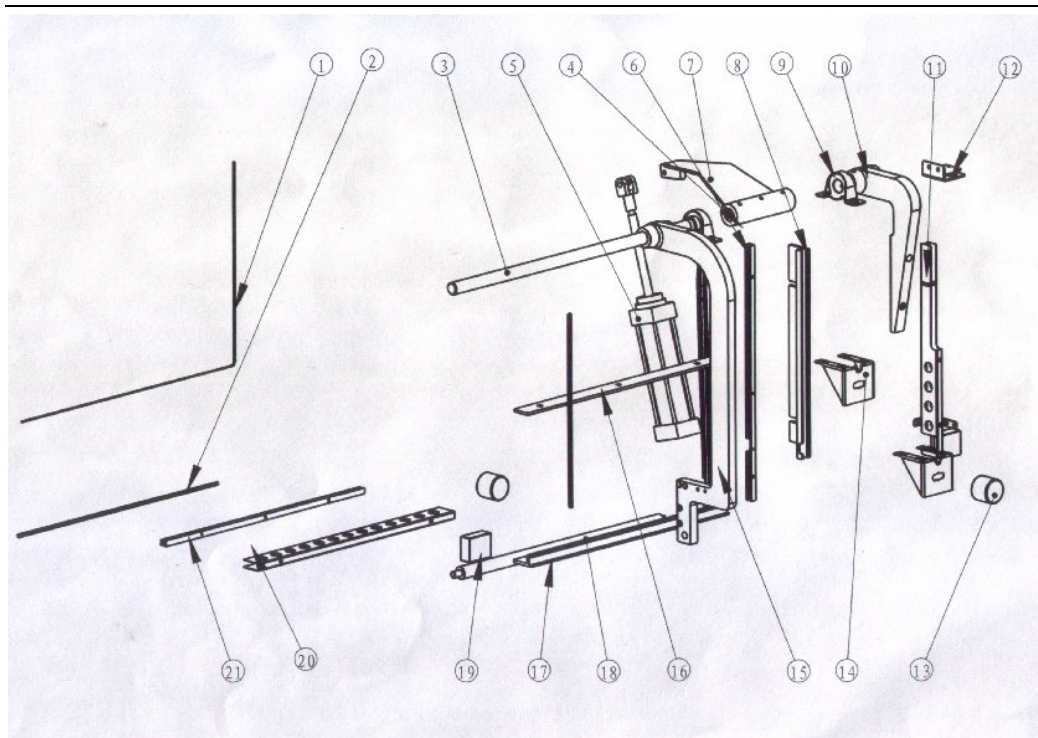


FIGURE 2

NO	NAME	QUAN.
M2.1	HEATER	2
M2.2	HOLDER OF HEATER	2
M2.3	SHAFT	1
M2.4	WIRE-WAY	1
M2.5	CYLINDER	1
M2.6	1#FIXATION BOARD OF HEATER	1
M2.7	CONNECTION BOARD	1
M2.8	SILICA GEL SLOT-BOARD 1	1
M2.9	P-TYPE BEARING PEDESTAL	2
M2.10	SWING PERCH CROSSBEAM 2	1
M2.11	RADIATOR (PRESS) BOARD 1	1
M2.12	SHALF	1
M2.13	MAGNET VALVES	2
M2.14	MAGENT VALVE SUPPORTERS	2
M2.15	SWING PERCH CROSSBEAM 1	1
M2.16	SCALE BOARD	1
M2.17	SILICA GEL SLOT-BOARD 2	1
M2.18	KNIGHT HEAD	1
M2.19	JRON-BLOCKS	2

AP1622A L-Sealer Service Manual

M2.20	RADIATOR (PRESS) BOARD 2	1
M2.21	FIXATION BOARD OF HEATER 2	1

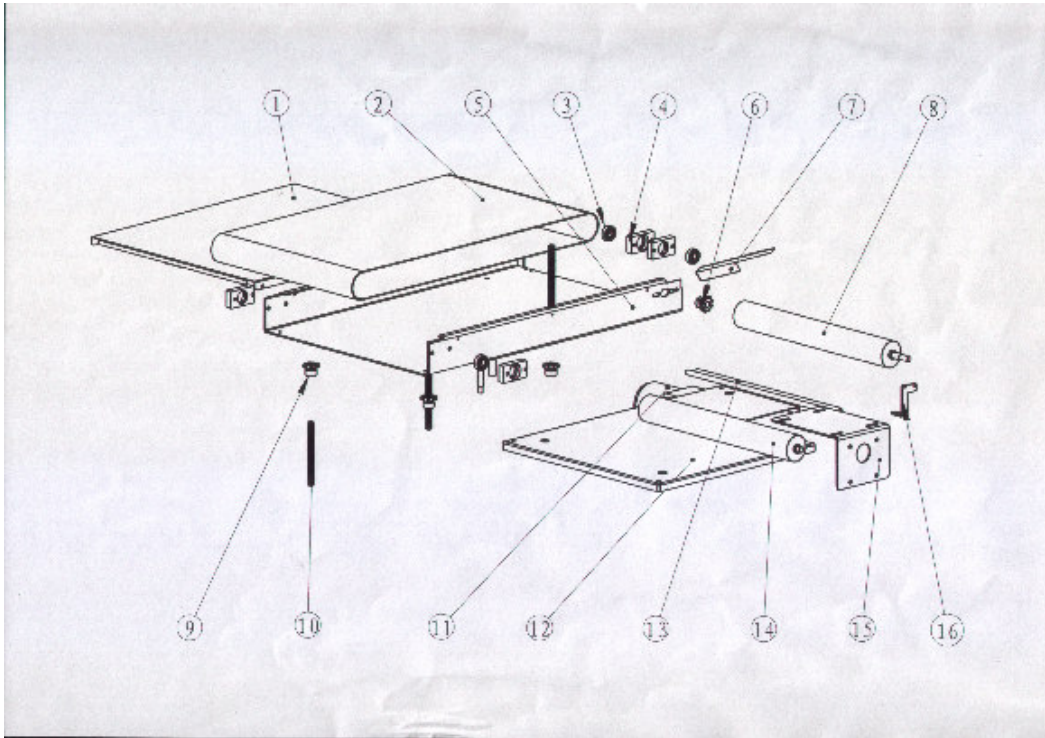


FIGURE 3

NO	NAME	QUAN.
M3.1	STRAP TRAY	1
M3.2	TRANSMISSION BELT	1
M3.3	BEARING	4
M3.4	BEARING PEDESTAL	4
M3.5	TRANSFER TRUNK	1
M3.6	MAIN DRIVER	1
M3.7	CHAIN WHEEL COVER	1
M3.8	MAIN ROLLER	1
M3.9	CHAIN WHEEL	4
M3.10	SCREW	1
M3.11	MOTOR	1
M3.12	PLATE	1
M3.13	SUPPORT SHAFT	2
M3.14	BRIVEN ROLLER	1
M3.15	Motor Board	1
M3.16	ROLLER SUPPORTER	2

AP1622A L-Sealer Service Manual

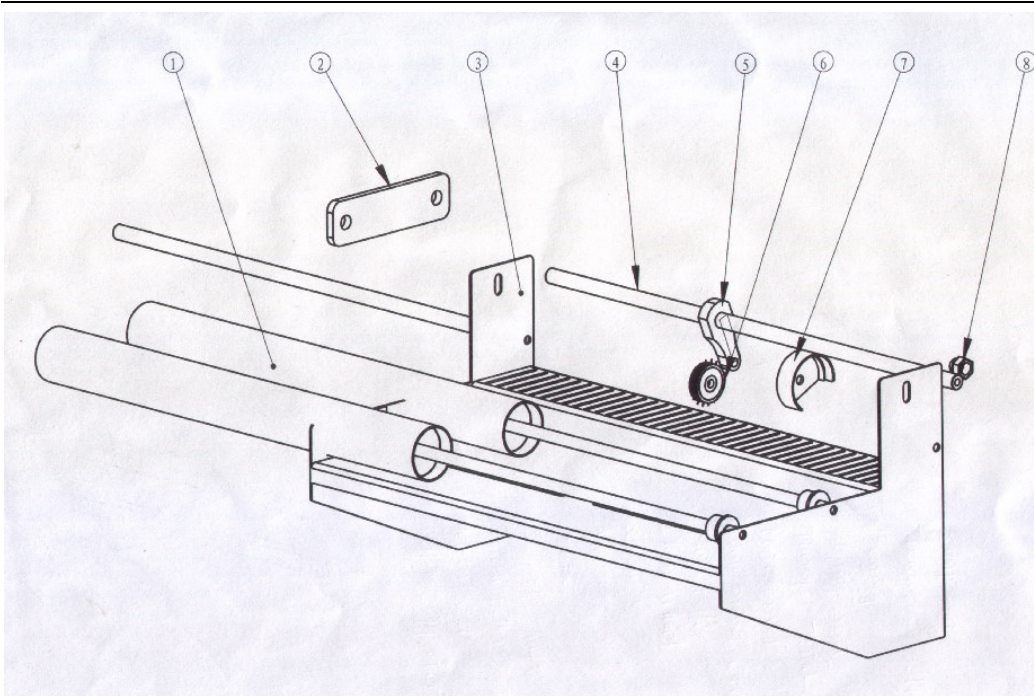
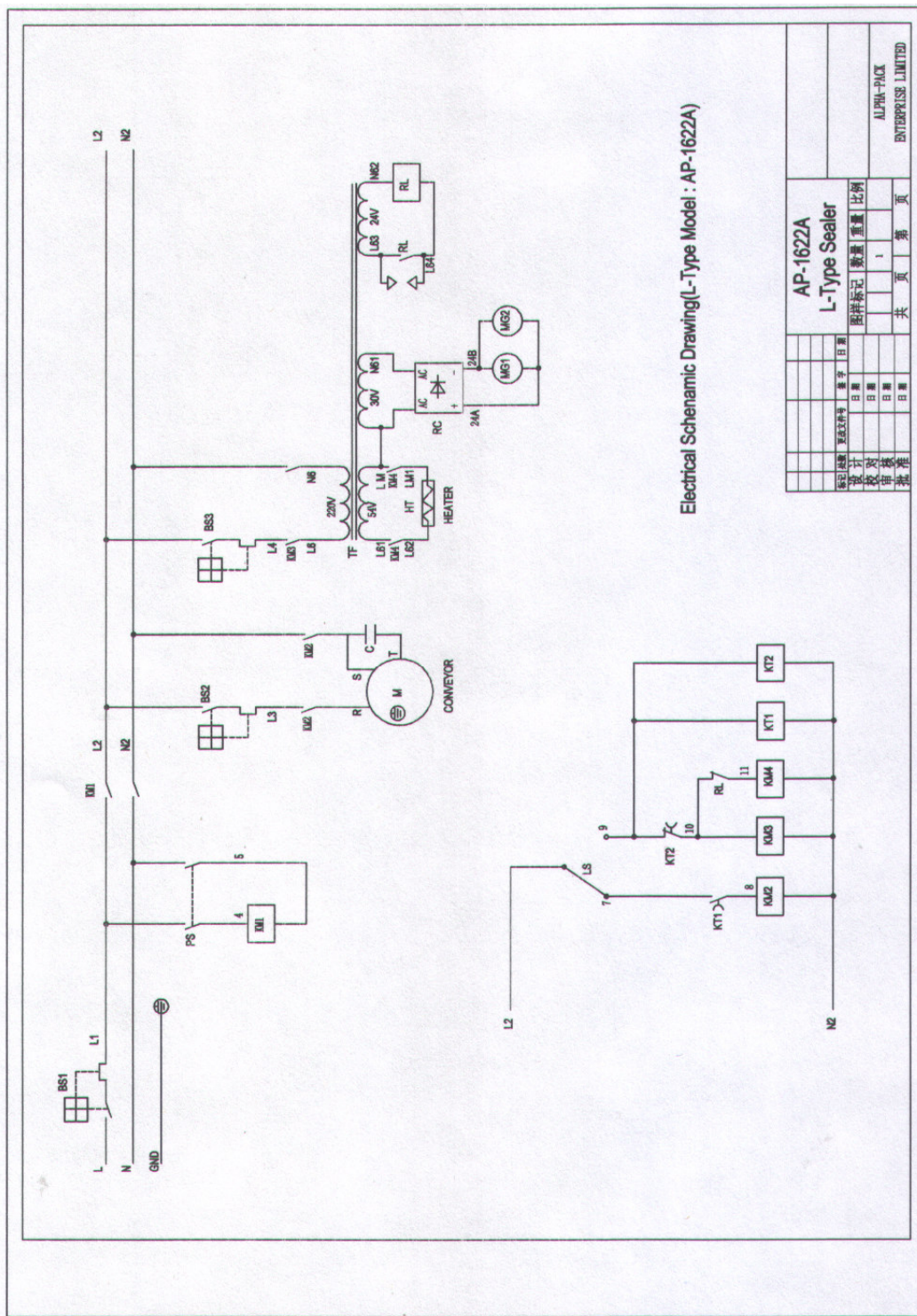


FIGURE 4

NO	NAME	QUAN.
M4.1	ROLLER	2
M4.2	BREAK PLATE	2
M4.3	FILM FEEDING SUPPORTER	1
M4.4	AXIS (SHAFT)	1
M4.5	WHEEL WITH NEEDLE	1
M4.6	PLASTIC COVER	1
M4.7	MAIN DRIVER COVER	1
M4.8	HEXAGRAM NUT	1
M4.9	STAINLESS STEEL BOLT : M8X40	1

AP1622A L-Sealer Service Manual

Electrical Schematic



制定日期		设计		审核		批准	
日期	日期	日期	日期	日期	日期	日期	日期
AP-1622A L-Type Sealer				图样标记 数量 重量 比例			
				共 页 第 页			
ALPHA-PACK ENTERPRISE LIMITED							

AP1622A L-Sealer Service Manual

REPLACED ELECTRICAL PARTS LIST

NO.	ITEM	NAME	DESCRIPTION	QTY	RMK.
E1	PS	PS	POWER SWITCH	1	
E2	BS1	BRAEKER	DZ47-C15, 1P, 15A	1	CHINT
E3	BS2	BREAKER	DZ47-D1, 1P, 1A	1	CHINT
E4	BS3	BREAKER	DZ47-D1, 1P, 5A	1	CHINT
E5	TF	TRANSFORMER	220V/50V,30V,24V, 800VA	1	
E6	RC	RECTIFIER	3510	1	
E7	MG1-2	MAGNET	MAGNET	2	Alpha-pack
E8	M	MOTOR	4IK25GN-C,25W,220VAC,0.3A, 5GN-10K	1	Orient
E9	C	CAPACITOR	400VAC, 1.5UF	1	Orient
E10	HT	Heating Element	0.35*5mm	1	Alpha-pack
E11	KM1,2,4	CONTACTOR	CJX2-0910, AC220V, 9A, 1NO	3	CHINT
E12	KM3	CONTACTOR	CJX2-0901, AC220V, 9A, 1NC	1	CHINT
E13	RL	RELAY	MY2J, 24VAC	1	OMRON
E14	KT1	TIMER	AH3-NA, 3s, 220VAC, ON-DELAY	1	ANLY
E15	KT2	TIMER	APS-2,10S,220VAC,OFF-DELAY	1	ANLY
E16	LS	PULSE SWITCH	D4MC-5000	1	OMRON